

AN ISO 9001:2015 CERTIFIED COMPANY[®]

POINS[®]

An Exclusive Furniture Fittings



Innovative design, stylish ideas



AN ISO 9001:2015 CERTIFIED COMPANY[®]

POINS

An Exclusive Furniture Fittings



Welcome



Poised to play a prominent role in decor

The world of architectural hardware is all about striking a fine balance between art and science. On one hand, it is pure art of touching hearts and creating impacts with sheer brilliance in designs; whereas on the other hand, it is all about science of achieving impeccable precision to deliver unmatched experience and performance.

At Pains, we have mastered the art of balancing art and science in all our offerings. 'Pains' is a brand envisaged, created and nurtured by Om Sai Manufacture, a renowned company in the hardware market across the nation.

We are committed to design, develop and deliver the finest in the hardware accessories segment, and the same approach has helped us reach the pinnacle of the industry.

It all begun with a humble endeavour, but the far-sighted vision of creating a brand that can implore an aura of reliability paid off and that begun the saga of supremacy.

The company has strategically invested in developing its own manufacturing facility, where the entire process of manufacturing masterpieces is taken care of with strict quality controls.

'Pains' brand now offers a promising portfolio of Cabinet Handles, Main Door Handles, knobs and Drawer Pulls. Responding quickly to the market trends and changing choices of the customers, 'Pains' offers exclusive collections of designs, in diverse material, sizes and finishes.

After ensuring the flawless quality of the products, the company has developed long term relations with distributors, the influencers and the end users, creating a strong network of like-minded people.

Quality

At Pains, we see our products as our finest brand ambassadors. It is the strongest value proposition we can offer. Like in any other sector, in the architectural sector, ultimately it is the quality of product that can create sound impression for the brand.

All in-house process

At Om Sai Manufacture, every product that leaves our premises under the brand name of 'Pains' is developed entirely through in-house processes.

We have invested heavily in the state-of-the-art manufacturing as well R&D facilities, which help us in maintaining our quality. Like in all the manufacturing processes, raw material, manufacturing progression and attribute checks play a crucial role in ensuring the desired quality of the end product. Since, we undertake every stage in our own facilities; it is much easier for us to implement stringent quality checks.

Rigorous Quality Checks

Be it the procurement of raw material, various stages of manufacturing or before delivery check, we leave no stone unturned to ensure that each piece that is sold under the 'Pains' brand, possess finest quality that can speak for itself.

We have a meticulous quality check process to ensure that each of our products offers quality and dependability, providing immaculate performance. During the manufacturing process robust tests and checks are followed. The whole thoughtfully cultivated regime of quality testing itself also goes under scrutiny at regular interval, ensuring only the best goes out of our premises.

Vision

Reaching the pinnacle in the gamut of hardware manufacturing and winning hearts with finest products and ethical dealings.

Mission

We strive to realise our vision by

- Enhancing creativity and innovation
- Nurturing a competent work environment
- Designing and delivering finest products
- Establishing relations, firmly based on quality and ethics



Unleash your imagination
Poins will take it to the **next level**



AN ISO 9001:2015 CERTIFIED COMPANY
POINS[®]
An Exclusive Furniture Fittings

Cabinet Handle



Design & Patent Registered

Model No. 801

Material	Finish	Size	Packing
Zinc Alloy	CP/TT	96, 128, 160, 224, 288, 416	96/30, 128/20, 160/15, 224/15, 288/15, 416/15

Cabinet Handle



AN ISO 9001:2015 CERTIFIED COMPANY
POINS
An Exclusive Furniture Fittings



Design & Patent Registered

Model No. 802

Material	Finish	Size	Packing
Zinc Alloy	CP/TT	96, 128, 160, 224	96/30, 128/20, 160/15, 224/15



AN ISO 9001:2015 CERTIFIED COMPANY
POINS[®]
An Exclusive Furniture Fittings

Cabinet Handle



Design & Patent Registered

Model No. 804

Material	Finish	Size	Packing
Zinc Alloy	CP, CP/TT	96, 128, 160, 224, 288	96/30, 128/20, 160/15, 224/15, 288/10

Cabinet Handle



AN ISO 9001:2015 CERTIFIED COMPANY
POINS
An Exclusive Furniture Fittings



Design & Patent Registered

Model No. 806

Material	Finish	Size	Packing
Zinc Alloy	CP/TT, Black/TT	96, 128, 160, 224	96/30, 128/20, 160/15, 224/15



AN ISO 9001:2015 CERTIFIED COMPANY
POINS[®]
An Exclusive Furniture Fittings

Cabinet Handle



Design & Patent Registered

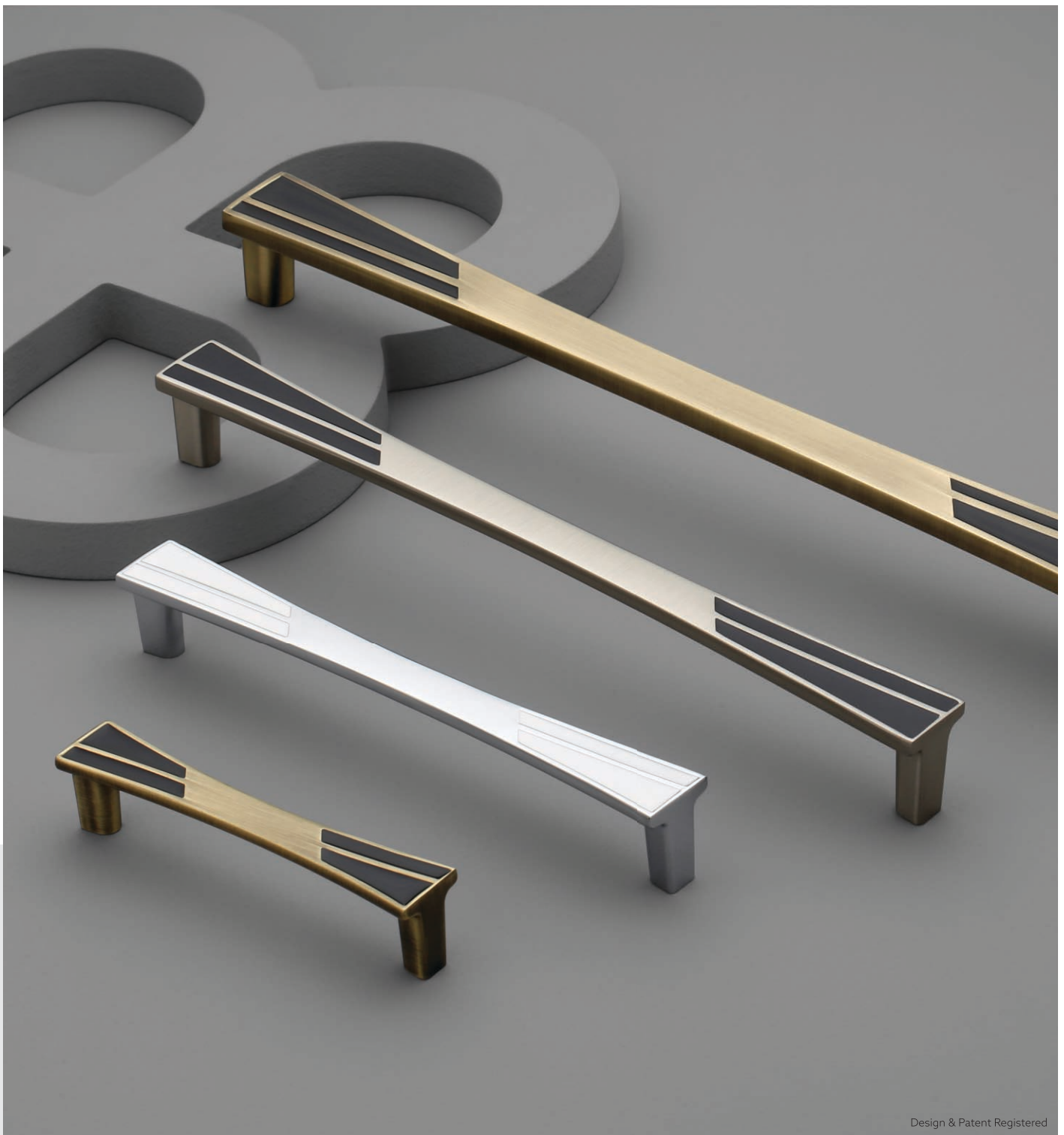
Model No. 807

Material	Finish	Size	Packing
Zinc Alloy	CP/TT	96, 128, 160, 224	96/30, 128/20, 160/15, 224/15

Cabinet Handle



AN ISO 9001:2015 CERTIFIED COMPANY
POINS
An Exclusive Furniture Fittings



Design & Patent Registered

Model No. 810

Material Zinc Alloy } **Finish** CP/White, SS/Black, AB/Black } **Size** 96, 160, 224, 288 } **Packing** 96/30, 160/20, 224/15, 288/15



AN ISO 9001:2015 CERTIFIED COMPANY
POINS[®]
An Exclusive Furniture Fittings

Main Door Handle



Design & Patent Registered

Model No. 812

Material	Finish	Size	Packing
Zinc Alloy	CP/TT	300, 400	300/03, 400/03

Cabinet Handle



AN ISO 9001:2015 CERTIFIED COMPANY
POINS
An Exclusive Furniture Fittings



Design & Patent Registered

Model No. 814

Material	Finish	Size	Packing
Zinc Alloy	CP, SS, Black/TT	96,160, 224, 288, 416	96/40, 160/20, 224/15, 288/15, 416/15



AN ISO 9001:2015 CERTIFIED COMPANY
POINS[®]
An Exclusive Furniture Fittings

Cabinet Handle



Design & Patent Registered

Model No. 816

Material	Finish	Size	Packing
Zinc Alloy	CP/TT, SS	96,160, 224, 288	96/30, 160/20, 224/15, 288/15

Cabinet Handle



AN ISO 9001:2015 CERTIFIED COMPANY
POINS
An Exclusive Furniture Fittings



Design & Patent Registered

Model No. 817

Material	Finish	Size	Packing
Zinc Alloy	CP/TT, SS	96, 128, 160, 224, 288, 416	96/30, 128/25, 160/20, 224/15, 288/15, 416/10



AN ISO 9001:2015 CERTIFIED COMPANY
POINS[®]
An Exclusive Furniture Fittings

Cabinet Handle



Design & Patent Registered

Model No. 819

Material	Finish	Size	Packing
Zinc Alloy	CP/SS, CP/Wenge	96,160, 224, 288	96/24, 160/16, 224/12, 288/08

Cabinet Handle



AN ISO 9001:2015 CERTIFIED COMPANY
POINS
An Exclusive Furniture Fittings



Design & Patent Registered

Model No. 820

Material	Finish	Size	Packing
Zinc Alloy	CP/Black, SS	96, 160, 224, 288	96/40, 160/20, 224/15, 288/15



AN ISO 9001:2015 CERTIFIED COMPANY
POINS[®]
An Exclusive Furniture Fittings

Main Door Handle



Design & Patent Registered

Model No. 821

Material	Finish	Size	Packing
Zinc Alloy	CP/TT	300, 400	300/01, 400/01

Cabinet Handle



AN ISO 9001:2015 CERTIFIED COMPANY
POINS
An Exclusive Furniture Fittings



Design & Patent Registered

Model No. 823

Material	Finish	Size	Packing
Zinc Alloy	CP, SS	32, 96, 160, 224, 288, 416	32/50, 96/30, 160/20, 224/15, 288/15, 416/10



AN ISO 9001:2015 CERTIFIED COMPANY[®]
POINS[®]
An Exclusive Furniture Fittings

Main Door Handle



Design & Patent Registered

Model No. 827

Material	Finish	Size	Packing
Zinc Alloy	SS, AB	200, 300, 400	200/06, 300/06, 400/03

Cabinet Handle



AN ISO 9001:2015 CERTIFIED COMPANY
POINS[®]
An Exclusive Furniture Fittings



Design & Patent Registered

Model No. 829

Material	Finish	Size	Packing
Zinc Alloy	CP/TT, SS	96, 160, 224, 288	96/30, 160/20, 224/15, 288/15



AN ISO 9001:2015 CERTIFIED COMPANY
POINS
An Exclusive Furniture Fittings

Cabinet Handle



Design & Patent Registered

Model No. 830

Material	Finish	Size	Packing
Zinc Alloy	AB, AC, Silver	96, 160, 224, 288	96/30, 160/20, 224/15, 288/15

Cabinet Handle



AN ISO 9001:2015 CERTIFIED COMPANY
POINS
An Exclusive Furniture Fittings



Design & Patent Registered

Model No. 831

Material	Finish	Size	Packing
Zinc Alloy	CP, SS, AB	96, 160, 224, 288, 416	96/30, 160/20, 224/15, 288/15, 416/10



AN ISO 9001:2015 CERTIFIED COMPANY
POINS[®]
An Exclusive Furniture Fittings

Cabinet Handle



Design & Patent Registered

Model No. 833

Material	Finish	Size	Packing
Zinc Alloy	CP, SS	96, 160, 224, 288	96/30, 160/20, 224/15, 288/15



AN ISO 9001:2015 CERTIFIED COMPANY®
POINS®
An Exclusive Furniture Fittings

Cabinet Handle



Design & Patent Registered

Model No. 834

Material	Finish	Size	Packing
Zinc Alloy	CP/SS, Wenge, Children	96, 160, 224, 288	96/24, 160/16, 224/12, 288/08



AN ISO 9001:2015 CERTIFIED COMPANY
POINS
An Exclusive Furniture Fittings

Cabinet Handle



Design & Patent Registered

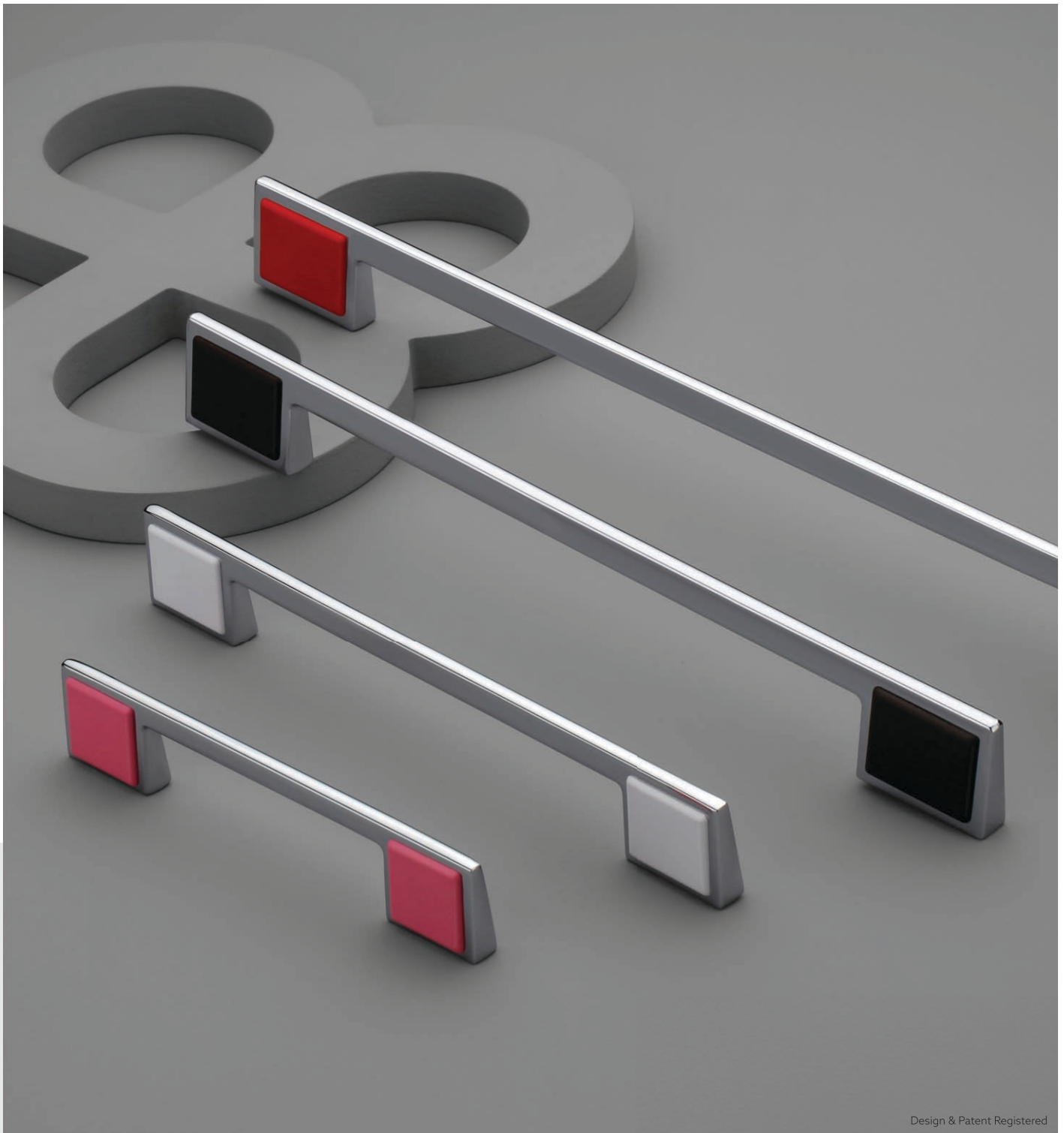
Model No. 835

Material	Finish	Size	Packing
Zinc Alloy	CP/Black, CP/SS, CP/Wenge	96, 160, 224, 288	96/30, 160/20, 224/15, 288/15

Cabinet Handle



AN ISO 9001:2015 CERTIFIED COMPANY
POINS
An Exclusive Furniture Fittings



Design & Patent Registered

Model No. 836

Material Zinc Alloy | **Finish** CP/Pink, Red, White, Wenge | **Size** 96, 160, 224, 288 | **Packing** 96/25, 160/20, 224/15, 288/15



AN ISO 9001:2015 CERTIFIED COMPANY
POINS[®]
An Exclusive Furniture Fittings

Cabinet Handle



Design & Patent Registered

Model No. 837

Material Zinc Alloy **Finish** CP, Black/Matt, SS/Matt **Size** 96, 160, 224, 288, 356

Packing
96/30, 160/20, 224/15, 288/15, 356/15

Cabinet Handle



AN ISO 9001:2015 CERTIFIED COMPANY
POINS
An Exclusive Furniture Fittings



Design & Patent Registered

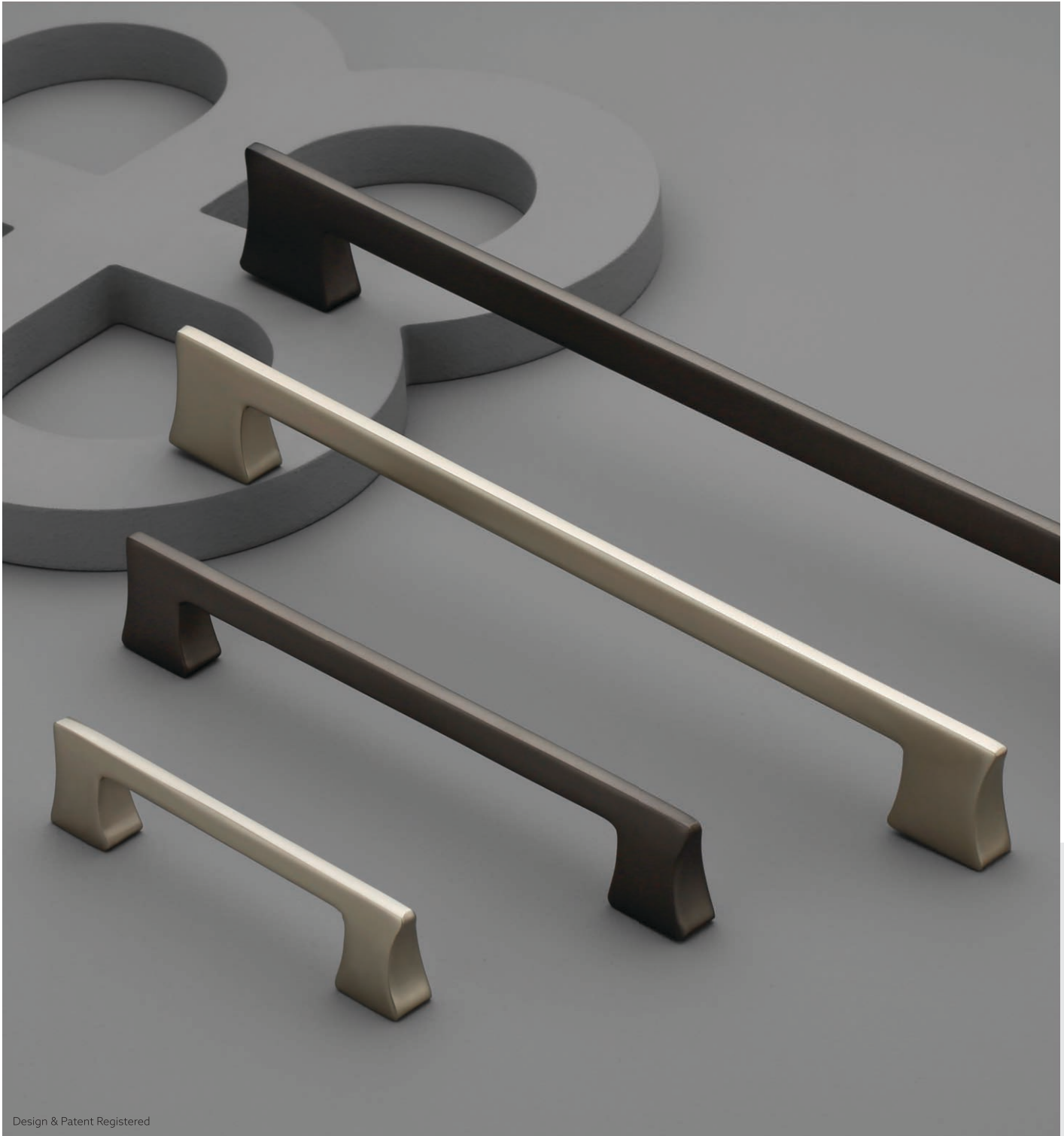
Model No. 838

Material	Finish	Size	Packing
Zinc Alloy	CP/White, CP/Black	96, 160, 224, 288	96/30, 160/20, 224/15, 288/15



AN ISO 9001:2015 CERTIFIED COMPANY
POINS[®]
An Exclusive Furniture Fittings

Cabinet Handle



Design & Patent Registered

Model No. 839

Material	Finish	Size	Packing
Zinc Alloy	Black/Matt, SS/Matt	96, 160, 224, 288, 416	96/30, 160/20, 224/15, 288/15, 416/10

Cabinet Handle



AN ISO 9001:2015 CERTIFIED COMPANY
POINS
An Exclusive Furniture Fittings



Design & Patent Registered

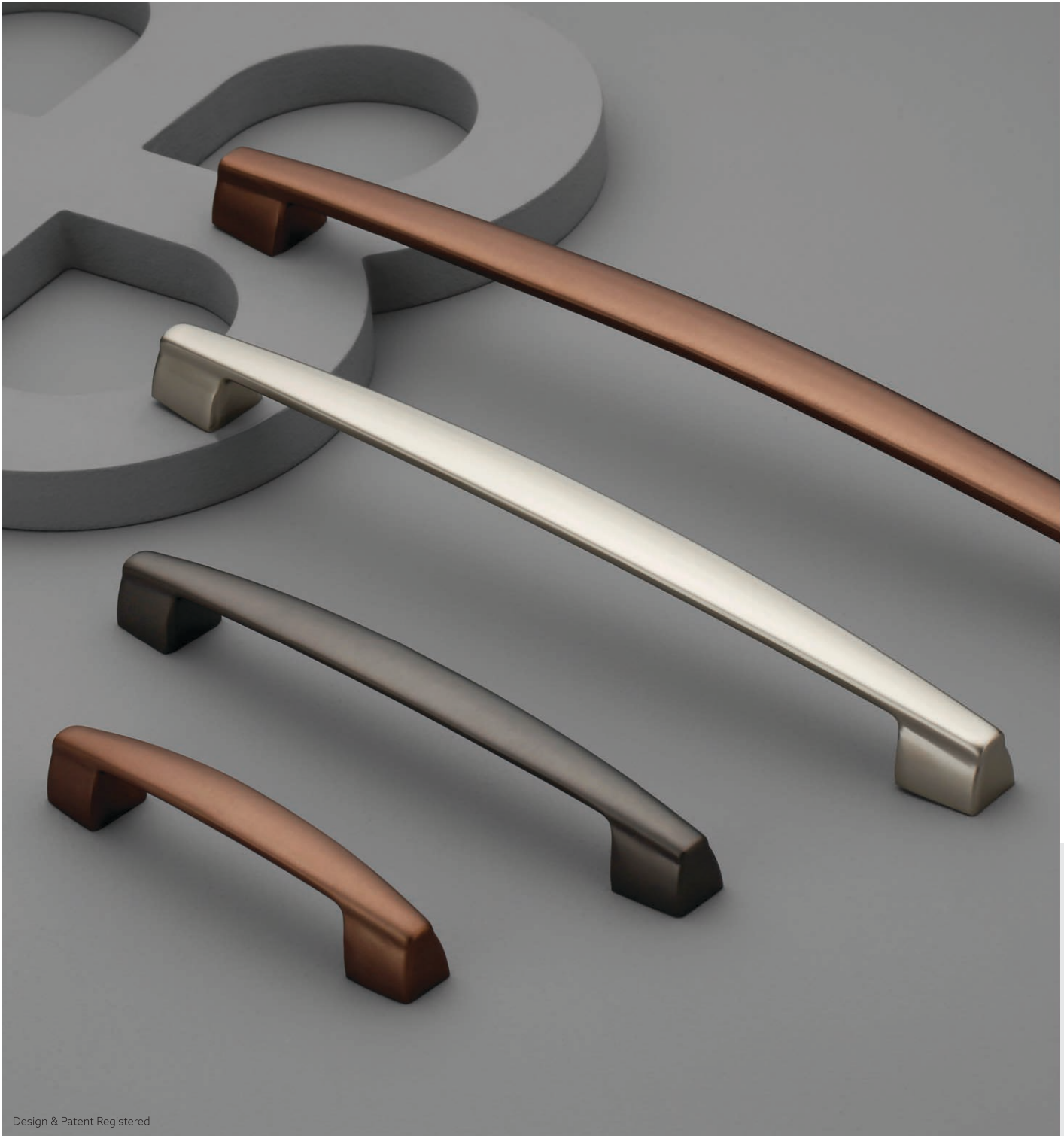
Model No. 840

Material	Finish	Size	Packing
Zinc Alloy	Satin, Cola, AB	96, 160, 224, 288	96/40, 160/25, 224/15, 288/15



AN ISO 9001:2015 CERTIFIED COMPANY
POINS
An Exclusive Furniture Fittings

Cabinet Handle



Design & Patent Registered

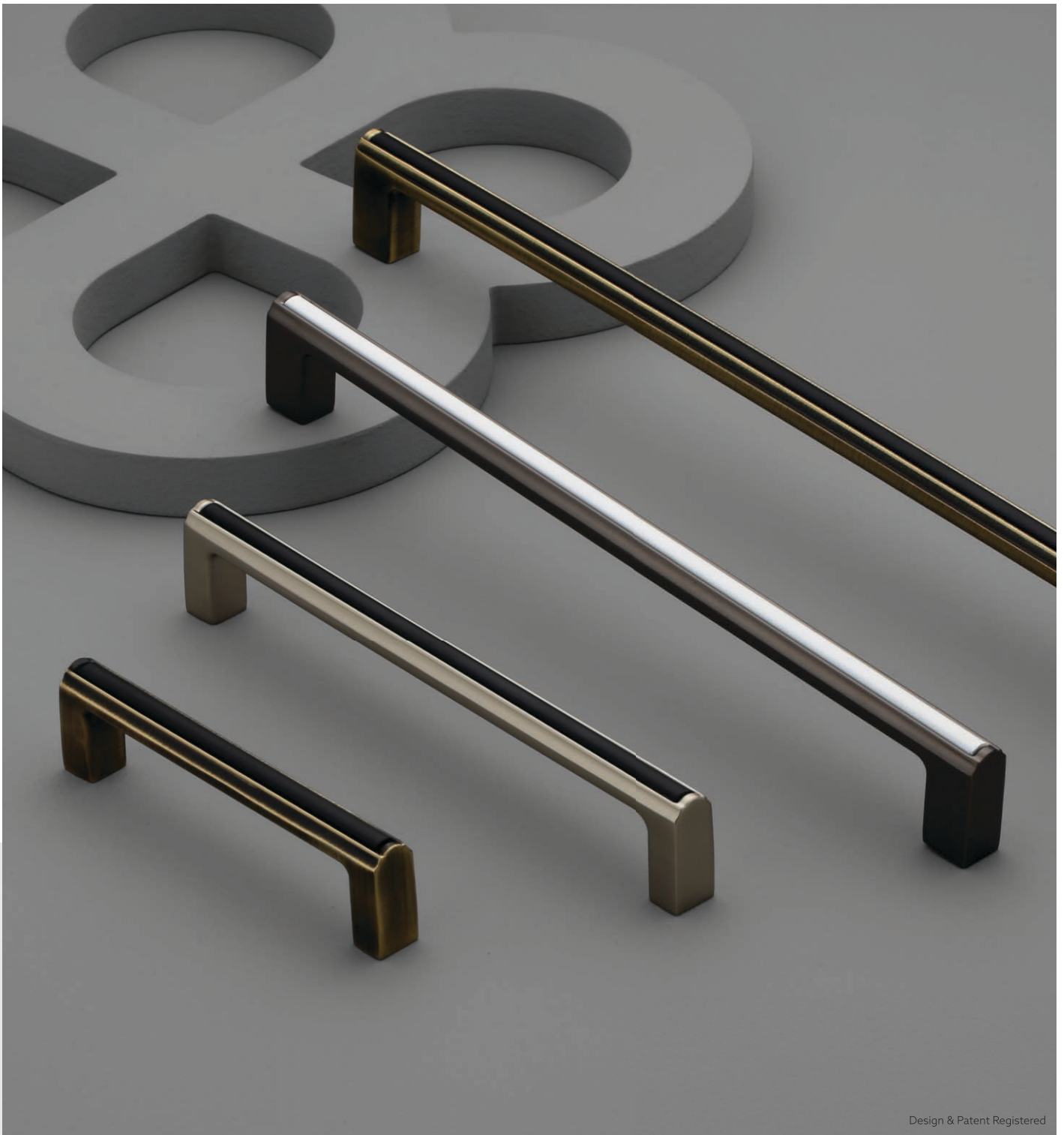
Model No. 841

Material	Finish	Size	Packing
Zinc Alloy	Satin, Black/Matt, Cola/Matt	96, 160, 224, 288	96/30, 160/20, 224/15, 288/15

Cabinet Handle



AN ISO 9001:2015 CERTIFIED COMPANY
POINS
An Exclusive Furniture Fittings



Design & Patent Registered

Model No. 842

Material	Finish	Size	Packing
Zinc Alloy	AB/Black, Black/White, Satin/Black,	96, 160, 224, 288	96/40, 160/20, 224/15, 288/15



AN ISO 9001:2015 CERTIFIED COMPANY
POINS[®]
An Exclusive Furniture Fittings

Cabinet Handle



Design & Patent Registered

Model No. 843

Material	Finish	Size	Packing
Zinc Alloy	Satin, AB, Black/TT	96, 160, 224, 288	96/30, 160/20, 224/15, 288/15

Cabinet Handle



AN ISO 9001:2015 CERTIFIED COMPANY
POINS
An Exclusive Furniture Fittings



Design & Patent Registered

Model No. 844

Material	Finish	Size	Packing
Zinc Alloy	Satin/CP, Cola/CP, Black/CP	96, 160, 224, 288	96/30, 160/20, 224/15, 288/15



AN ISO 9001:2015 CERTIFIED COMPANY
POINS
An Exclusive Furniture Fittings

Cabinet Handle



Design & Patent Registered

Model No. 845

Material Zinc Alloy **Finish** Satin, CP, Black/Matt, Rustic Copper **Size** 32, 96, 160, 224, 320

Packing
32/50, 96/30, 160/20, 224/15, 320/15

Cabinet Handle



AN ISO 9001:2015 CERTIFIED COMPANY
POINS
An Exclusive Furniture Fittings



Design & Patent Registered

Model No. 846

Material	Finish	Size	Packing
Zinc Alloy	Satin, CP, Black/Matt,	96, 160, 224, 320	96/40, 160/25, 224/15, 320/15



AN ISO 9001:2015 CERTIFIED COMPANY
POINS[®]
An Exclusive Furniture Fittings

Cabinet Handle



Design & Patent Registered

Model No. 847

Material	Finish	Size	Packing
Zinc Alloy	Satin, CP, AB, Cola/Matt	96, 160, 224, 320	96/30, 160/20, 224/15, 320/15

Cabinet Handle



AN ISO 9001:2015 CERTIFIED COMPANY
POINS
An Exclusive Furniture Fittings



Design & Patent Registered

Model No. 848 (Strip : PVD Finish)

Material	Finish	Size	Packing
Zinc Alloy	Satin/Black, Satin/CP, Black/Gold	96, 160, 224, 320	96/24, 160/16, 224/12, 320/08



AN ISO 9001:2015 CERTIFIED COMPANY
POINS
An Exclusive Furniture Fittings

Cabinet Handle



Design & Patent Registered

Model No. 901

Material | **Finish** | **Size**
Aluminum | CP, Rose Gold, SS/Brush | 96, 160, 224, 288, 448, 576

Packing
96/30, 160/20, 224/15, 288/15, 448/15, 576/15

Cabinet Handle



AN ISO 9001:2015 CERTIFIED COMPANY
POINS
An Exclusive Furniture Fittings



Design & Patent Registered

Model No. 902

Material	Finish	Size	Packing
Aluminum	CP, Rose Gold, SS/Brush	50, 128, 192, 256, 375	50/30, 128/15, 192/12, 256/12, 375/12



AN ISO 9001:2015 CERTIFIED COMPANY®
POINS®
An Exclusive Furniture Fittings

Cabinet Handle



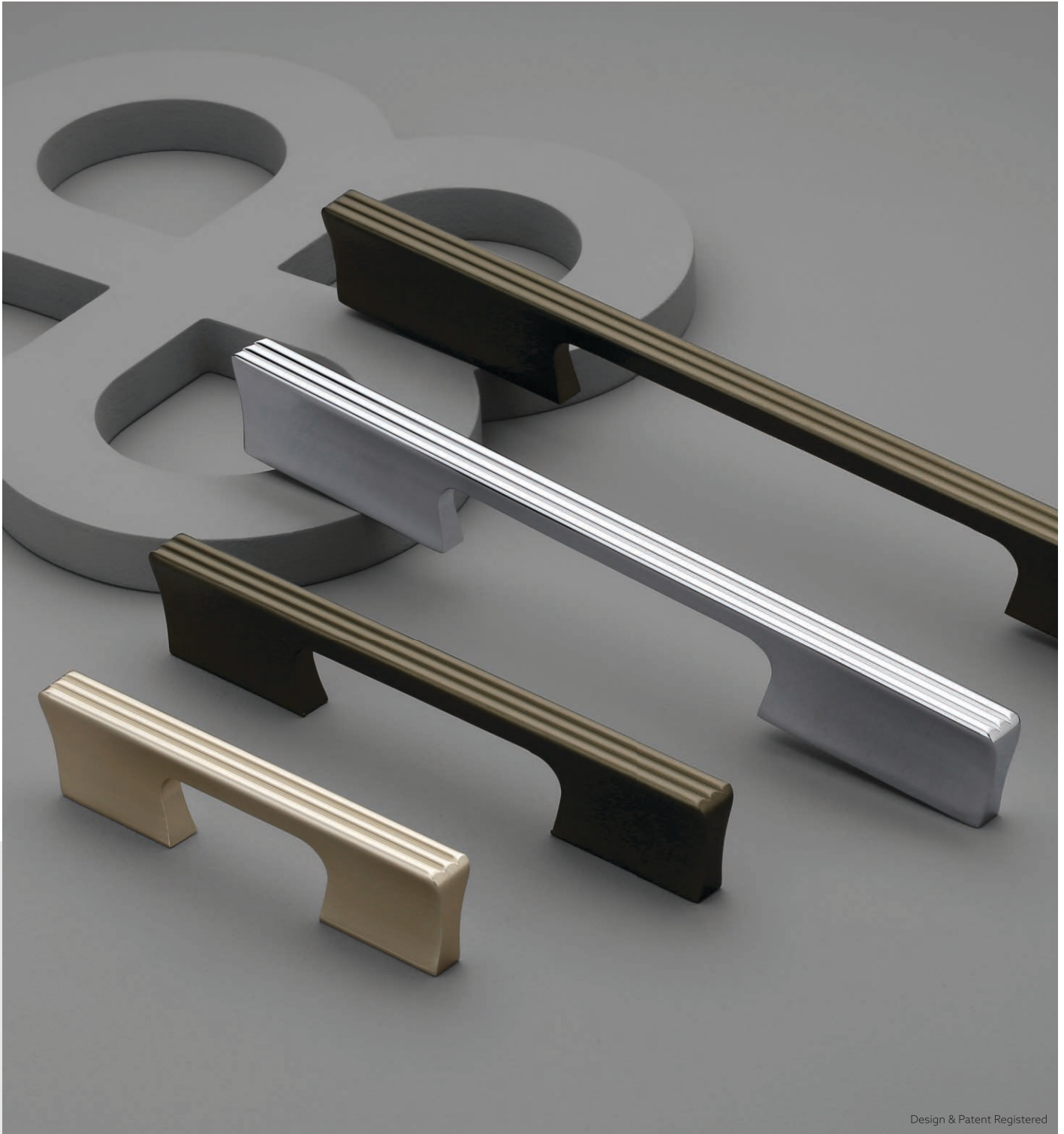
Design & Patent Registered

Model No. 903

Material	Finish	Size
Aluminum	CP, Rose Gold, SS/Brush	96, 160, 224, 288, 448, 576

Packing
96/30, 160/20, 224/15, 288/15, 448/15, 576/15

Cabinet Handle



Design & Patent Registered

Model No. 904

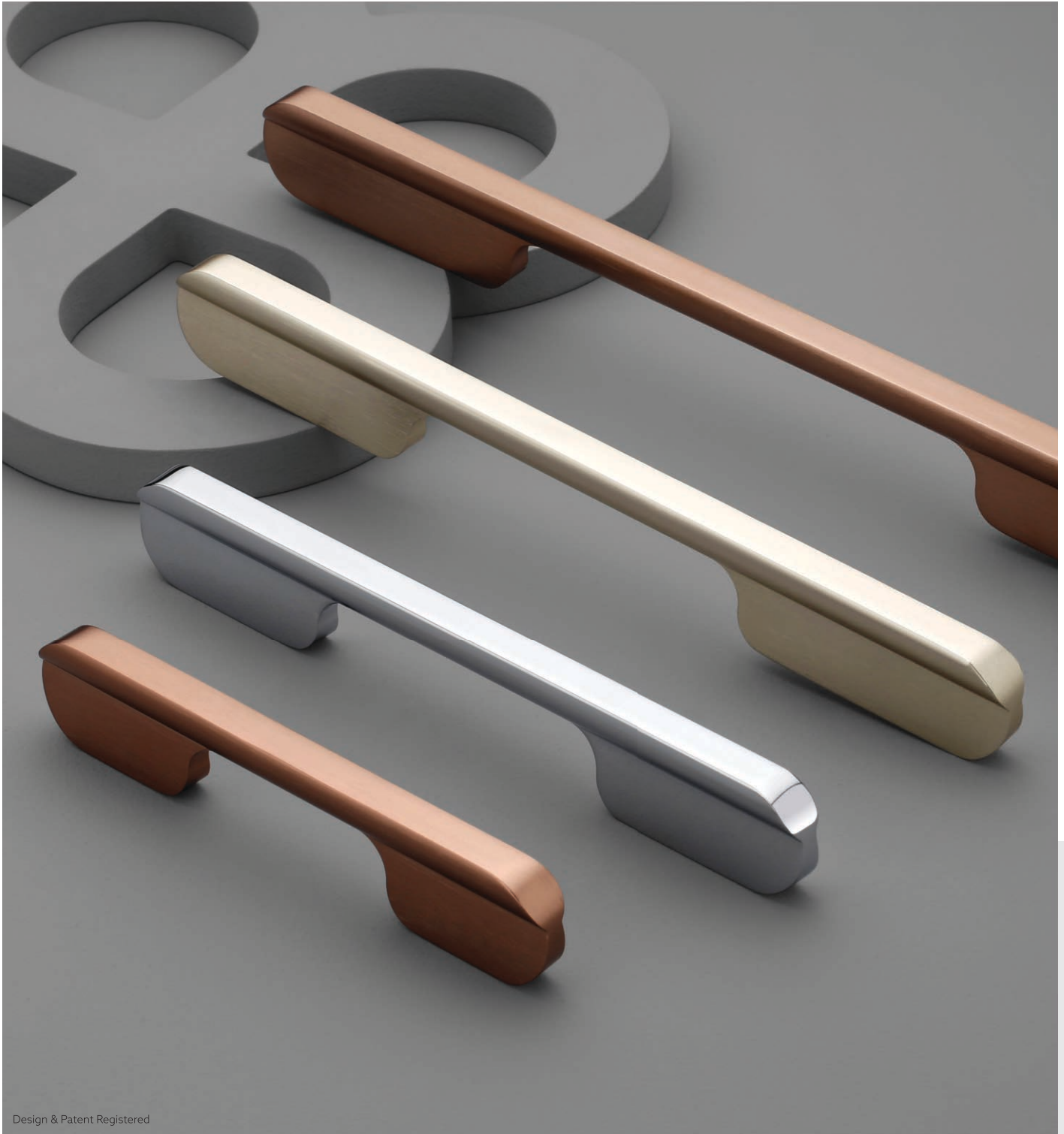
Material } **Finish** } **Size**
Aluminum } SS/Brush, CP, Metallic } 96, 160, 224, 288, 448, 576

Packing
96/30, 160/20, 224/15, 288/15, 448/15, 576/15



AN ISO 9001:2015 CERTIFIED COMPANY
POINS[®]
An Exclusive Furniture Fittings

Cabinet Handle



Design & Patent Registered

Model No. 905

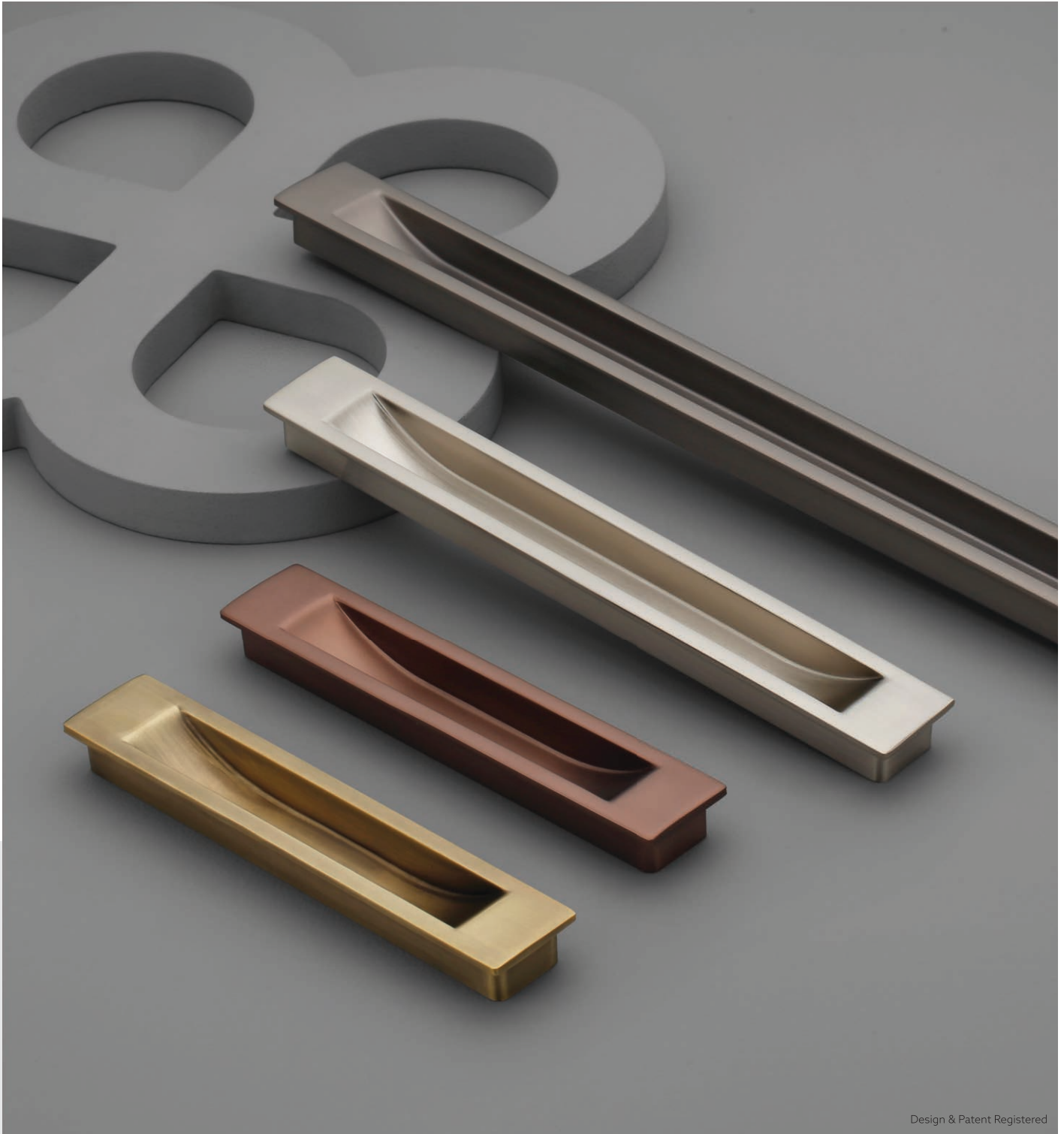
Material | **Finish** | **Size**
Aluminum | CP, Rose Gold, SS/Brush | 96, 160, 224, 288, 448, 576

Packing
96/25, 160/15, 224/15, 288/15, 448/15, 576/15

Conceal Handle



AN ISO 9001:2015 CERTIFIED COMPANY
POINS
An Exclusive Furniture Fittings



Design & Patent Registered

Conceal-01

Material	Finish	Size	Packing
Zinc Alloy	CP, SS, AB, Black/Matt, Cola/Matt	128, 192, 320	128/20, 192/15, 320/15



AN ISO 9001:2015 CERTIFIED COMPANY
POINS[®]
An Exclusive Furniture Fittings

Conceal Handle



Design & Patent Registered

Conceal-02

Material	Finish	Size	Packing
Zinc Alloy	CP, SS, AB	96, 128, 160, 224	96/16, 128/12, 160/10, 224/10

Conceal Handle



AN ISO 9001:2015 CERTIFIED COMPANY
POINS[®]
An Exclusive Furniture Fittings



Design & Patent Registered

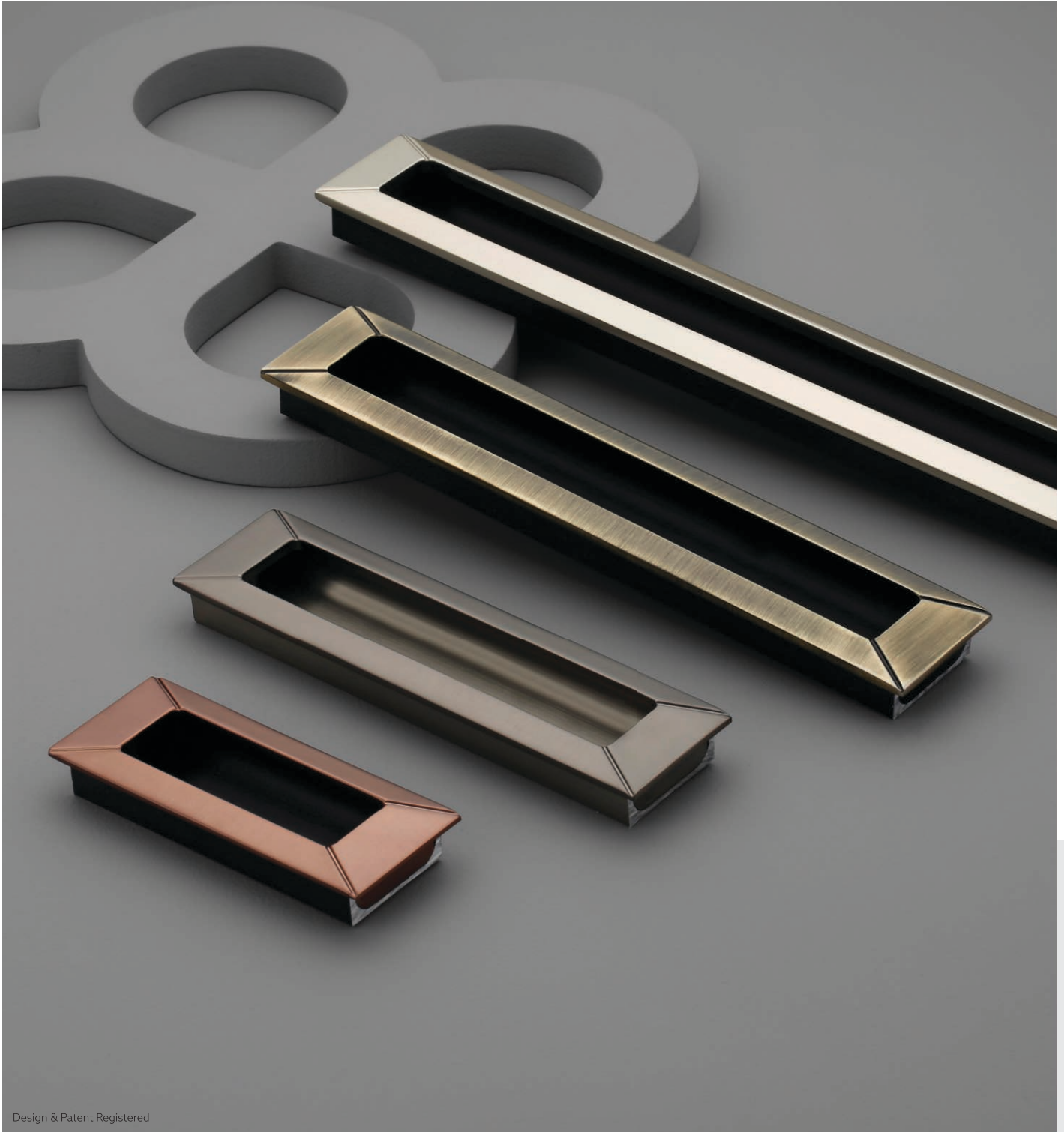
Conceal-04

Material	Finish	Size	Packing
Zinc Alloy	AB, AC, Silver	96, 128, 160, 224	96/20, 128/12, 160/10, 224/10



AN ISO 9001:2015 CERTIFIED COMPANY
POINS[®]
An Exclusive Furniture Fittings

Conceal Handle



Design & Patent Registered

Conceal-05

Material	Finish	Size	Packing
Zinc Alloy	Satin, AB, Black/Matt, Cola/Matt	96, 160, 224, 320	96/18, 160/12, 224/10, 320/10

Knob



AN ISO 9001:2015 CERTIFIED COMPANY
POINS
An Exclusive Furniture Fittings



Design & Patent Registered

Knob-01

Material Zinc Alloy } **Finish** CP, SS, AB } **Packing** 50



AN ISO 9001:2015 CERTIFIED COMPANY
POINS[®]
An Exclusive Furniture Fittings

Knob



Design & Patent Registered

Knob-02

Material	Finish	Packing
Zinc Alloy	CP, SS, AB	50

Knob



AN ISO 9001:2015 CERTIFIED COMPANY
POINS
An Exclusive Furniture Fittings



Design & Patent Registered

Knob-03

Material	Finish	Packing
Zinc Alloy	CP, SS, AB	50



AN ISO 9001:2015 CERTIFIED COMPANY
POINS[®]
An Exclusive Furniture Fittings

Knob



Design & Patent Registered

Knob-04

Material	Finish	Packing
Zinc Alloy	CP, SS, AB	50

Knob



AN ISO 9001:2015 CERTIFIED COMPANY
POINS
An Exclusive Furniture Fittings



Design & Patent Registered

Knob-05

Material Finish Packing
Zinc Alloy CP, SS, 40



AN ISO 9001:2015 CERTIFIED COMPANY
POINS
An Exclusive Furniture Fittings

Knob



Design & Patent Registered

Knob-06

Material	Finish	Packing
Zinc Alloy	CP, Satin, Black/Matt, Cola/Matt	50

Kadi



AN ISO 9001:2015 CERTIFIED COMPANY
POINS
An Exclusive Furniture Fittings



Design & Patent Registered

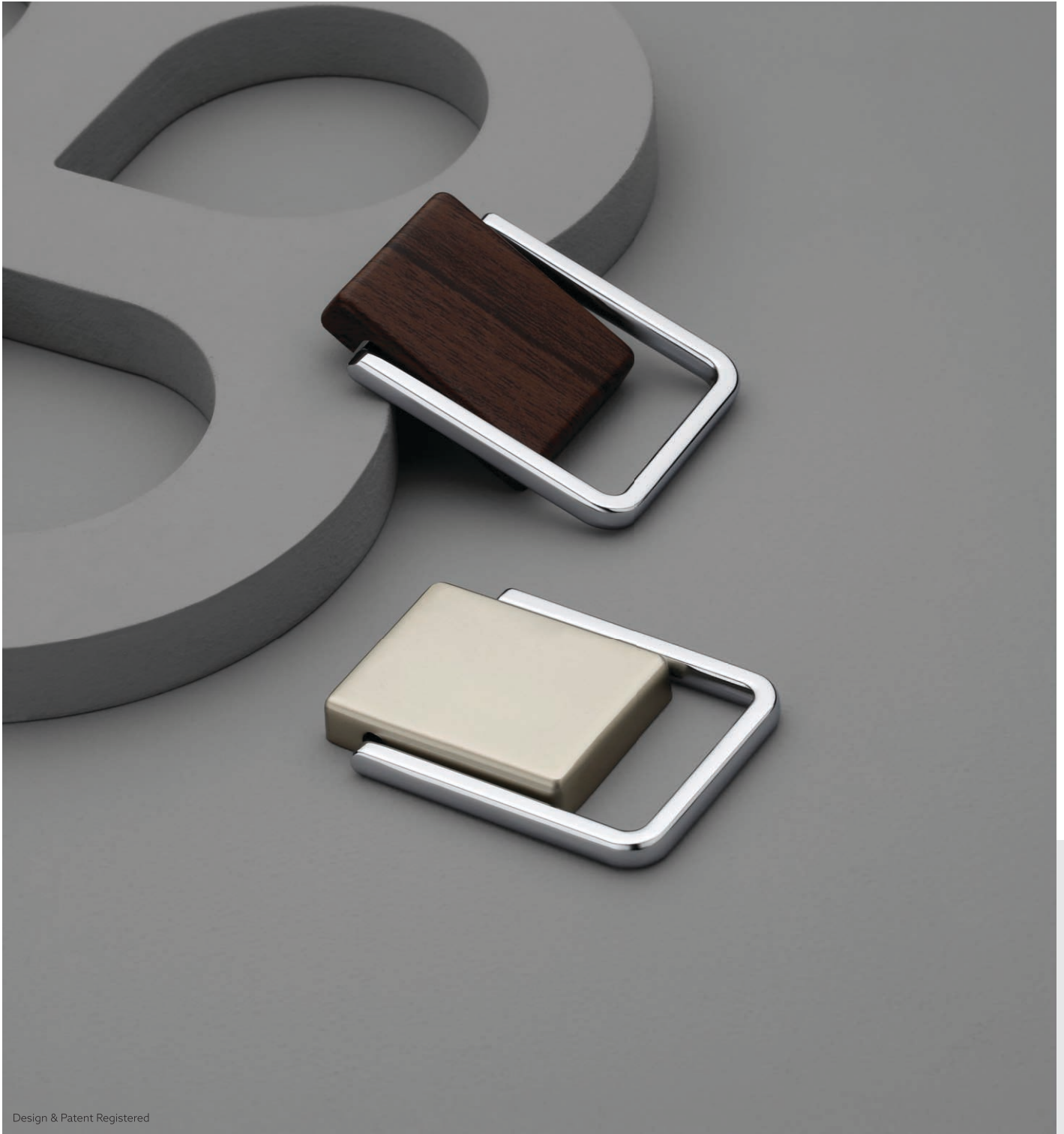
Kadi-01

Material Zinc Alloy **Finish** Satin/Black, AB/Black **Packing** 40



AN ISO 9001:2015 CERTIFIED COMPANY
POINS[®]
An Exclusive Furniture Fittings

Kadi



Design & Patent Registered

Kadi-02

Material	Finish	Packing
Zinc Alloy	Satin/CP, CP/Wengi	40

Glass Door Handle



AN ISO 9001:2015 CERTIFIED COMPANY
POINS
An Exclusive Furniture Fittings



Design & Patent Registered

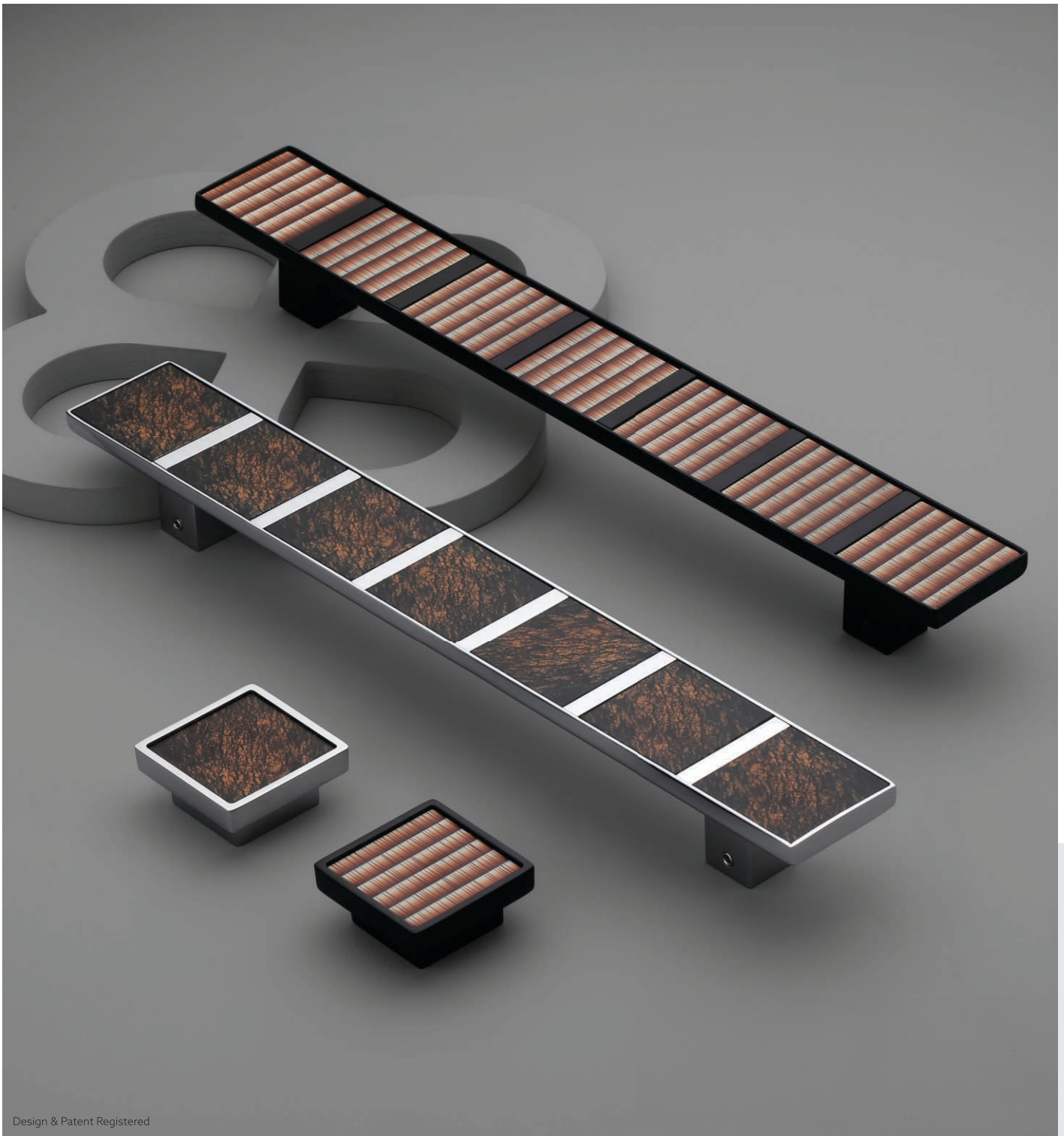
Model No. 1001

Material	Finish	Size	Packing
S.S. - 304	SS/Black, Black/AB	300, 450, 600mm	1 - Set



AN ISO 9001:2015 CERTIFIED COMPANY
POINS
An Exclusive Furniture Fittings

Glass Door Handle & Knob



Design & Patent Registered

Model No. 1002

Material	Finish	Size	Packing
S.S. - 304 Knob : Brass	CP/Rustic, Black/Lining	32, 300, 450, 600mm	32/16, 300, 450, 600/1-Set



AN ISO 9001:2015 CERTIFIED COMPANY
POINS
An Exclusive Furniture Fittings

Glass Door Handle



Design & Patent Registered

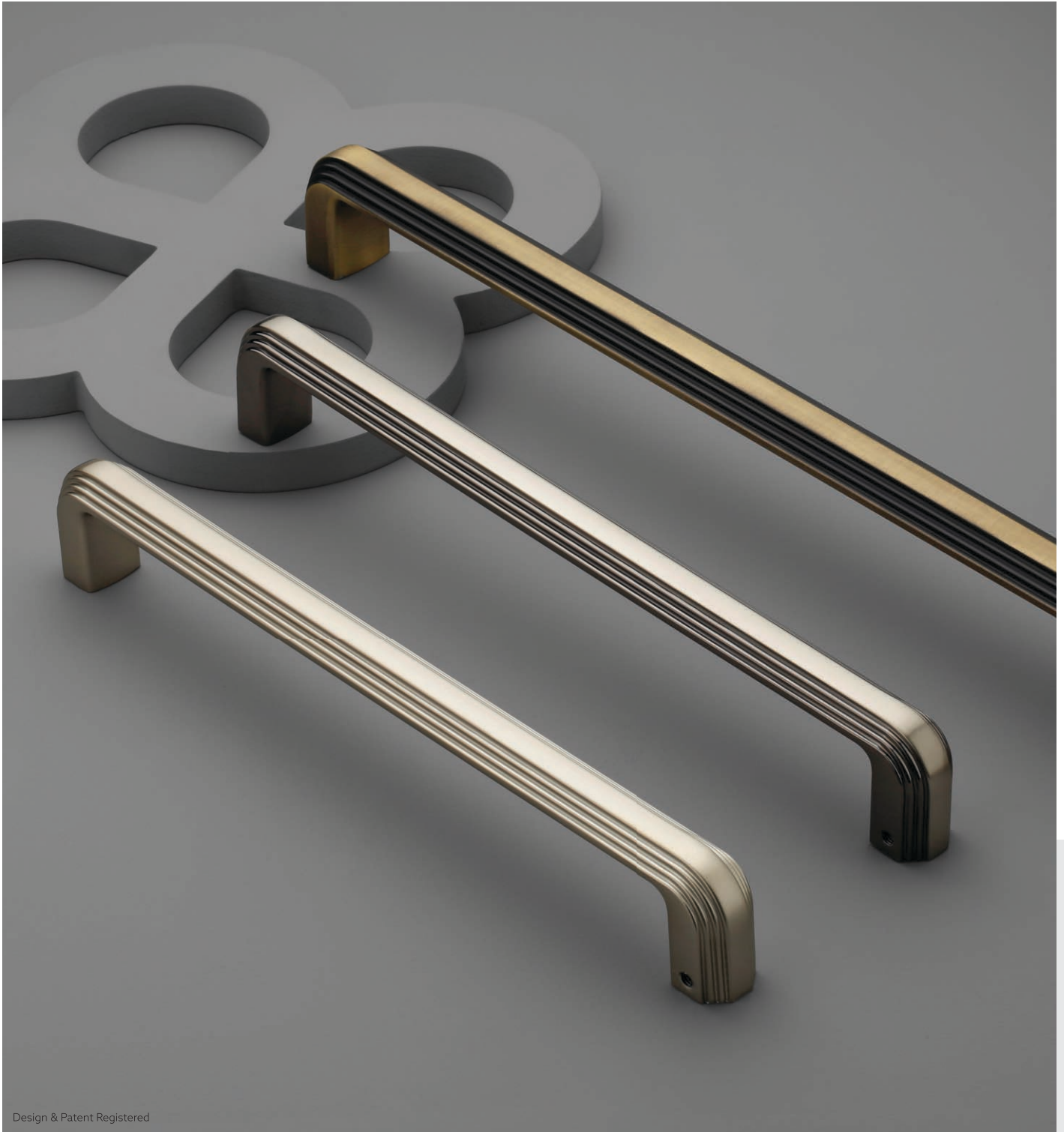
Model No. 1003

Material S.S. - 304 | Finish CP/SS, SS/Wenge | Size 300, 450, 600mm | Packing 1-Set



AN ISO 9001:2015 CERTIFIED COMPANY
POINS[®]
An Exclusive Furniture Fittings

Glass Door Handle



Design & Patent Registered

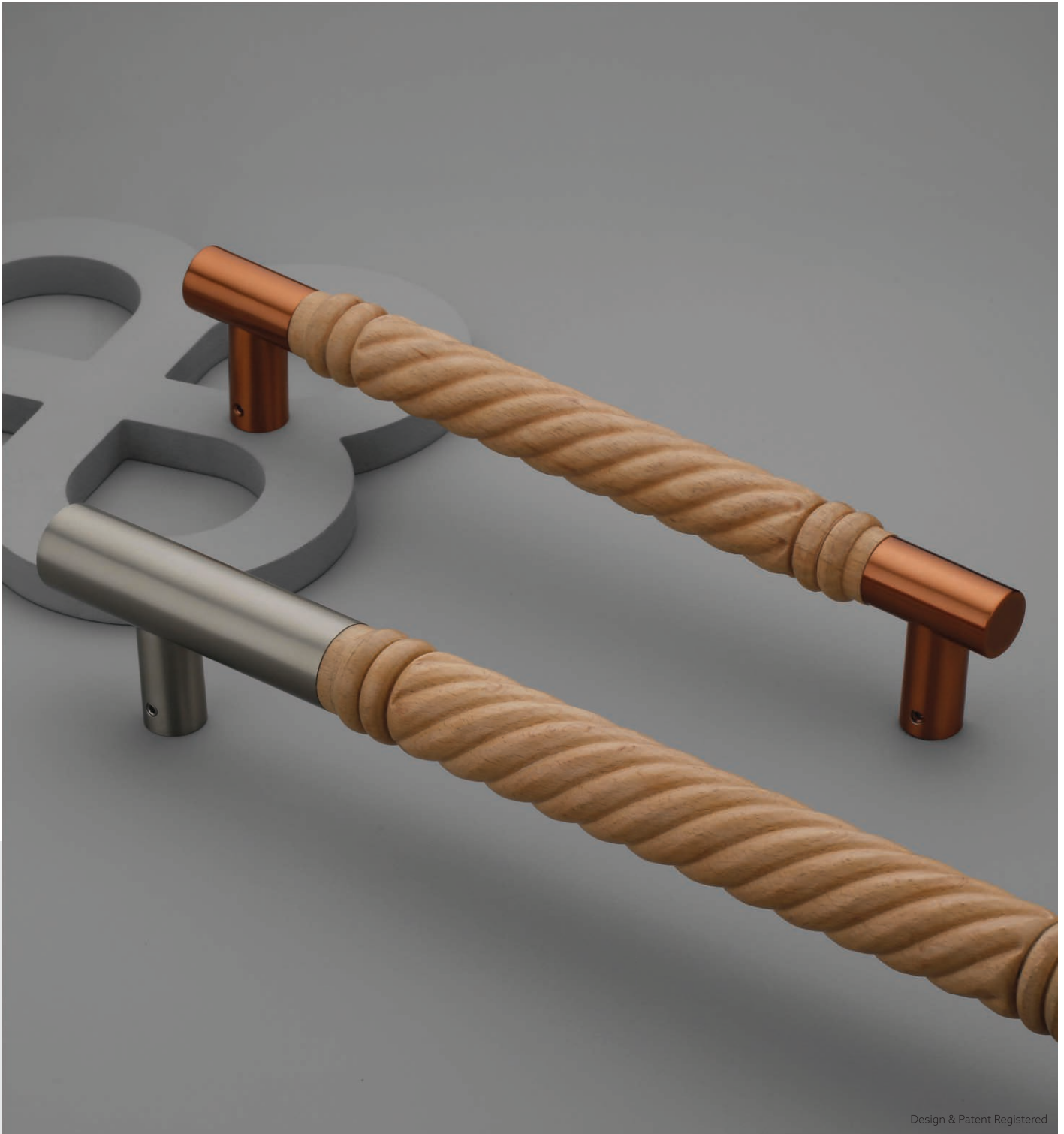
Model No. 1004

Material	Finish	Size	Packing
Zinc Alloy	Satin, Black/TT, AB	300, 450mm	1-Set

Glass Door Handle



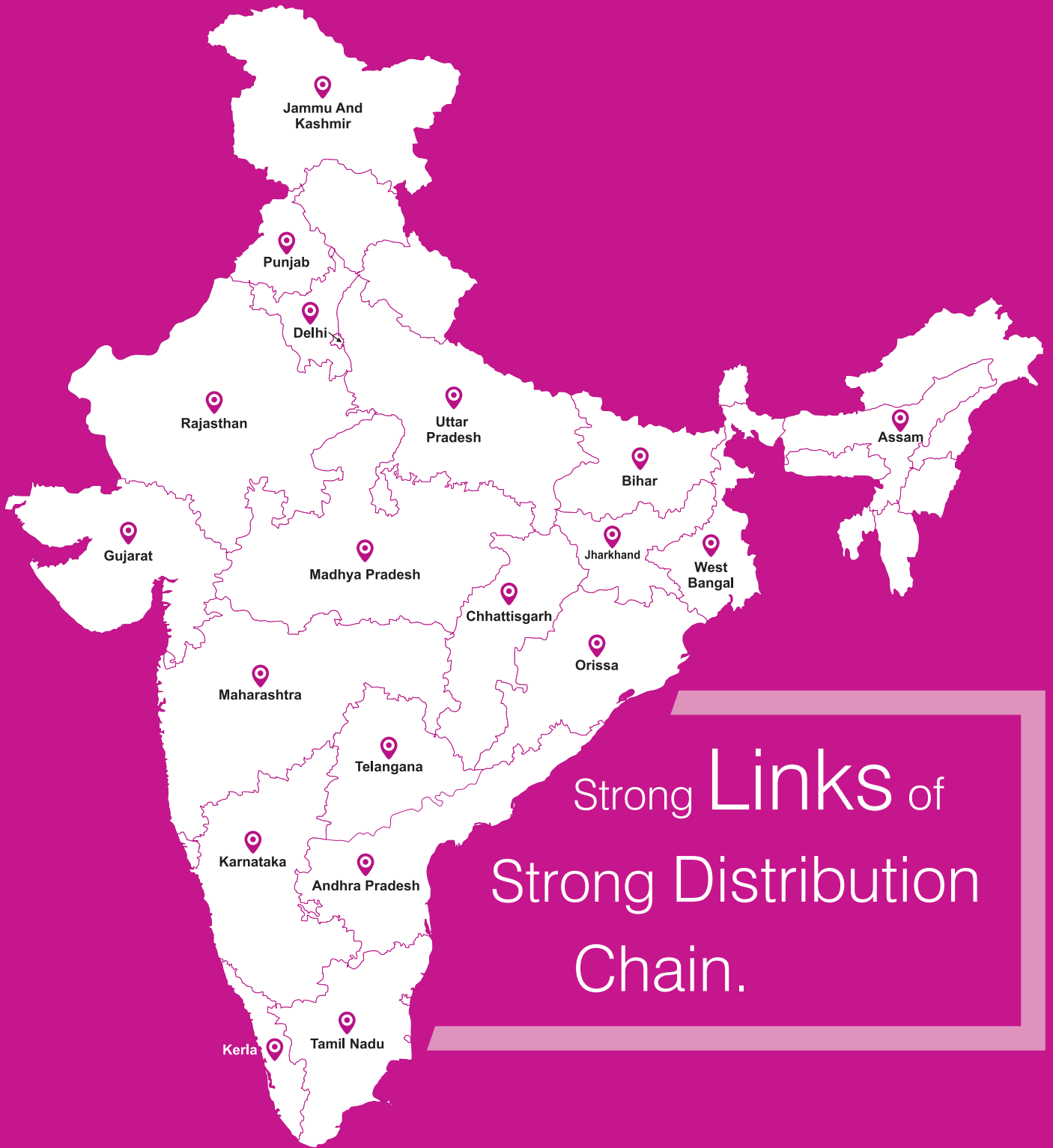
AN ISO 9001:2015 CERTIFIED COMPANY
POINS
An Exclusive Furniture Fittings



Design & Patent Registered

Model No. 1005

Material S.S. - 304 } Finish SS/Wood, Copper/Wood } Size 200, 300, 450, 600mm } Packing 1-Set



Strong **Links** of
Strong Distribution
Chain.





AN ISO 9001:2008 CERTIFIED COMPANY®
POINS®
An Exclusive Furniture Fittings

Mfg. By.
OM SAI MANUFACTURE
Rajkot (Guj. - INDIA)